

Hillsborough County Community Violence Prevention Collaborative



Leadership Council Meeting

Omar K. Lightfoot Recreation Center
10901 N 56th St, Temple Terrace, FL 33617
October 8, 2013, 1:00 p.m.

A G E N D A

- I. Welcome and Introductions: *Chair*
- II. Debrief Prevention Institute Site Visit of September 12:
PI and Herb Marlowe
 - a. General Comments
 - b. Risk and Resilience Factors (See Attachment 1):
 - i. Do the Top Themes Complement Our Focus?
 - ii. What is Already Being Done In these Areas?
 - iii. Prioritize top 3-4 Risk/Resilience Factors
- III. Summits: *Herb Marlowe*
 - a. Proposal re: Ongoing large-scale efforts in community
- IV. Subcommittees: *PI and Herb Marlowe*
 - a. Existing Committees
 - b. Infrastructure Subcommittee
 - c. Business Subcommittee
- V. Announcements and Closing: *Chair*
 - a. Next Meeting of Leadership Council and Subcommittees on November 7, hosted by the Hillsborough County Sheriff's Office, 520 N. Falkenburg Rd., Assembly Room
 - b. Closing Questions and Comments
- VI. Adjourn



Office of the State Attorney
13th Judicial Circuit
Hillsborough County



Draft Prioritized Risk and Resilience Factors for Preventing Community Violence in Hillsborough County



Top Themes

Society and Community Level

1. Coordination of resources and services among community agencies
2. Community design that promotes safety
3. Employment and economic opportunities
4. Weak health, educational, economic and social policies and laws

Relationship and Individual Level

5. Poor parent-child relationships; family conflict
6. Mental health problems; alcohol and substance use

Prioritized Resilience Factors

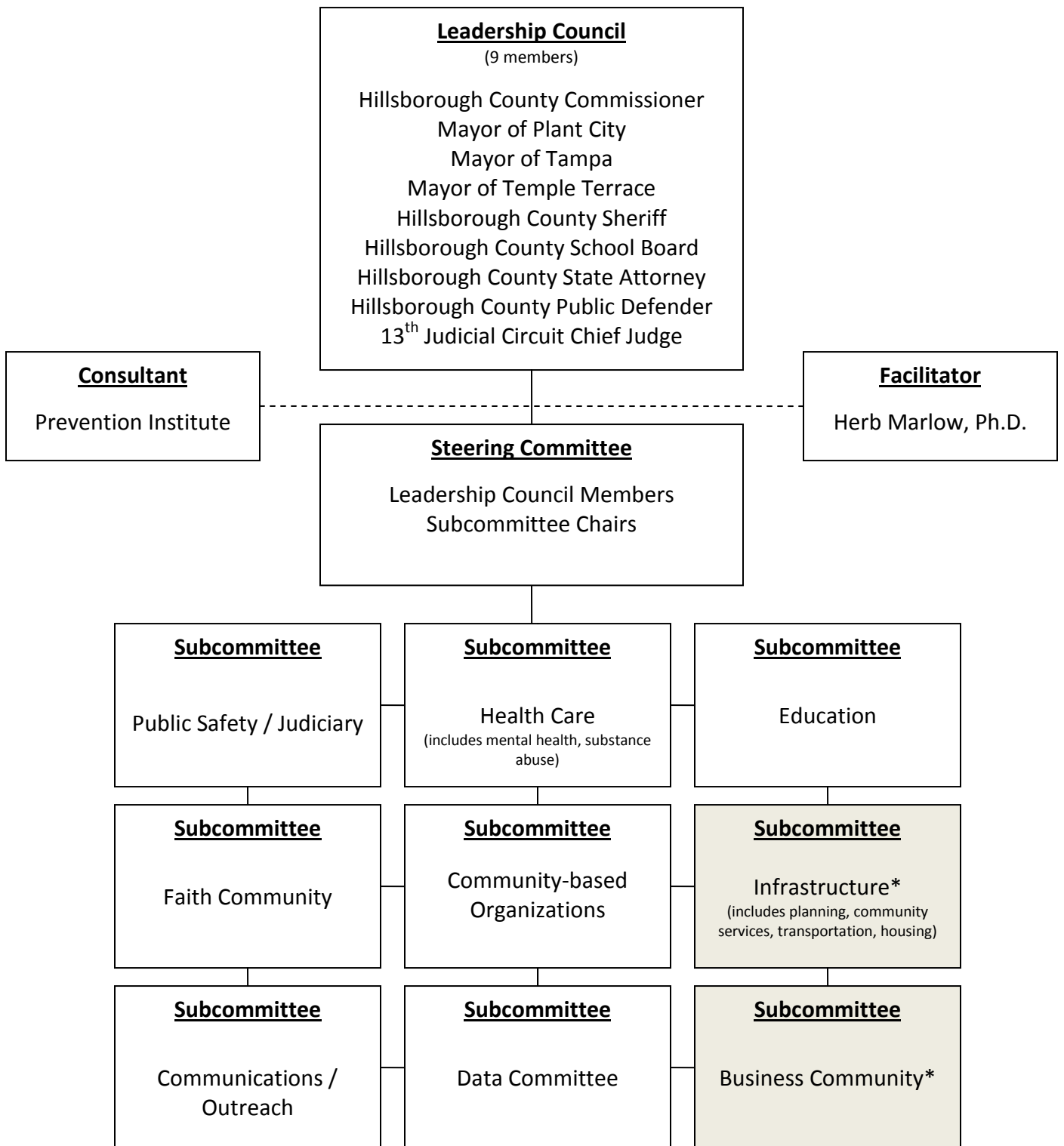
1. Coordination of resources and services among community agencies
2. Community design that promotes safety
3. Employment and economic opportunities
4. Access to mental health and substance abuse services
5. Community support and connectedness
6. Collective efficacy; willingness to act for the common good
7. Quality schools
8. Strong social networks
9. Connection to a caring adult; positive relationships and attachments
10. Skills in solving problems non-violently
11. Connection and commitment to school
12. Norms that support nonviolence and alternatives to violence
13. Opportunities for artistic and cultural expression
14. Opportunities for meaningful participation
15. High expectations

Prioritized Risk Factors

1. Poor neighborhood support and lack of cohesion
2. Community deterioration
3. Poor parent-child relationships; family conflict
4. Mental health problems; alcohol and substance use
5. Weak health, educational, economic and social policies and laws
6. Neighborhood poverty
7. High alcohol outlet density
8. Incarceration and re-entry
9. Media violence
10. Weapons
11. Low educational achievement
12. Lack of non-violent social problem-solving skills; impulsiveness and poor behavioral control
13. Experiencing and witnessing violence
14. Norms that support aggression toward others
15. Societal inequities
16. Diminished economic opportunities; high unemployment rates
17. Academic failure and failure of the school system

COMMUNITY VIOLENCE PREVENTION COLLABORATIVE

Organizational Chart



*shaded = not yet appointed

Hillsborough County Community Violence Prevention Collaborative

as of October 8, 2013

Leadership Council: 9 members

Hillsborough County Commissioner
Mayor of Plant City
Mayor of Tampa
Mayor of Temple Terrace
Hillsborough County School Board Chair
Hillsborough County Sheriff
Hillsborough County State Attorney
Hillsborough County Public Defender
13th Judicial Circuit Chief Judge

Public Safety / Judiciary: 10 members

Bay Area Legal Services: Joan Boles
Children's Justice Center : Patricia Waterman
State Attorney's Office: Douglas Covington
Hillsborough County Sheriff's Office: Capt. Scott Wellinger
Hillsborough County School District Chief of Security: Chief David Friedberg
Plant City Police Department: Chief Steven Singletary
Temple Terrace Police Department: Ret. Capt. Tracy Mishler
13th Judicial Circuit: Judge Lisa Campbell
University Area Community Development Corp: Daniel Jurman
TECO: Marvin Knight

Education: 9 members

School District of Hillsborough County: Dr. Larry Sykes
School District of Hillsborough County: (Retired) Carol Dell
Mendez Foundation: Charles Mendez
University of South Florida: Dr. Martha Coulter
University of South Florida: Dr. Kathleen Heide
State Attorney's Office: Ron Gale
Court Administration: Yvette Boatwright
Stetson College of Law: Dean Christopher Pietruszkiewicz
Unknown: Charles Rodriguez

Prospective additional members (+3):

Hillsborough County Adult & Community Education: Marc Hutek, Director

More Health: Karen Pesce, RN, Executive Director

USF Center for Victim Advocacy & Violence Prevention Nanci Newton

Health Care (includes Mental Health & Substance Abuse): 10 members

13th Judicial Circuit: Judge Jack Espinosa
Baycare Health Systems: Karen Kerr
Tampa General Hospital: Dr. Jason Wilson
Case Manager: DeeWynn Cox
Hillsborough County Sheriff's Office: Dr. Beth Weaver
First Care Walk-In Clinic: Jose DeLaRocha
Veterans Administration: Dr. Nicole Shiber
School District, Hills. County, School Health: Maria Russ
State Attorney's Office: Lorie Cura
Court Magistrate: Joan Montagno

Prospective additional members (+5):

Florida Mental Health Institute: Bryanna Fox
Hillsborough County Health Department: Walter Niles
Healthy Start Coalition: Jane Murphy, Executive Director
Hillsborough County Veterans Affairs: Frank Strom, Manager
US Dept. of Veterans Affairs: Frank Jones

Community-Based Organizations: 10 members

Private Attorney: Susan Johnson-Velez
Felton's Food & Produce: Lee Williams
National Association for the Advancement of Colored People (NAACP): Dr. Carolyn Collins
Consultant: Ronald Govin
Hillsborough County Sheriff's Office: Major Sank Montoute
Victims2Survivors, Inc.: Constance Rose
YMCA: Michael Brown
Crisis Center: David Braughton
State Attorney's Office Victim Assistance: Margaret Laing
Junior League: Andrea Layne

Prospective Members (+5):

Children's Board of Hillsborough County: Kelley Parris, Executive Director
Community Tampa Bay: Lance Lansrud
Derrick Brooks Charities, Inc: _____
The Spring: Mindy Murphy, CEO
United Way Suncoast: Rhonda Abbott

Faith Community: 10 members

Congregation Schaarai Zedek: Rabbi Richard Birnholz
Greater New Hope Anointed Ministries: Pastor Calvin Callins
Faith Alive Church: Antonio Hawkins
Temple Terrace Community Church: Pastor Ted Fielland
Hillsborough County Sheriff's Office: Major Curtis Flowers
Unknown: Chakita Hargrove
Abe Brown Minitries: Robert Blount
Bethesda Ministries CDC: Maxine Woodside
Unknown: Rita Peters
Court Administration 13th Judicial Circuit: Tonya S. Muhammad

Prospective Member (+1):

Muslim Faith Representative: Djamile Abdel-Jaleen

Communications / Outreach: 8 members

School District of Hillsborough County: Steve Hegerty
Temple Terrace: Michael Dunn
Hillsborough County Sheriff's Office: J.D. Calloway
City of Tampa: Ali Glisson
Public Defender's Office: Nichole Hanscom
13th Judicial Circuit: Jeff Stidham
State Attorney's Office: Mark Cox
Hillsborough County: Lori Hudson
Plant City:

Data Committee: 9 members

School District of Hillsborough County: Jeff Eakins
Temple Terrace: Deputy Chief B. Seeley
Hillsborough County Sheriff's Office: John Chaffin
Hillsborough County Sheriff's Office: Candace Perez
State Attorney's Office: Kelly Kelly
Hillsborough County BOCC: Bob Sheehan
Plant City: Mark Hudson
Planning Commission: Jamie Robe
13th Judicial Circuit: Angie Smith

COMMITTEES TO POPULATE 10/8/13: [FOR VISIONING PURPOSES ONLY]

Business Community

Caspers Company
Greater Tampa Chamber of Commerce
Hillsborough County Small Business Information Center
Tampa Bay Buccaneers
Tampa Bay Lightning
Tampa Bay Partnership
Tampa Bay Rays
Tampa /New York Yankees
TECO Energy
....

Infrastructure (includes planning, community services, transportation, housing)

City of Tampa Parks and Recreation
City of Temple Terrace Parks and Recreation
City of Plant City Parks and Recreation
Florida Apartment Association
Greater Tampa Association of Realtors
Hillsborough Area Rapid Transit (HARTline)
Hillsborough County Affordable Housing Department
Hillsborough County City-County Planning Commission
Hillsborough County Parks and Recreation
Metropolitan Planning Organization
Tampa Housing Authority
....

PROPOSED EXPANSION OF SUBCOMMITTEES
Community Violence Prevention Collaborative
8 October 2013

EDUCATION: From 9 to 12 members

Marc Hutek
Director of Adult & Community Education
901 E. Kennedy Boulevard
Tampa, Florida 33602

Karen Pesce, RN, Executive Director
More Health, Inc.
3821 Henderson Boulevard
Tampa, Florida 33629

Nanci Newton
USF Center for Victim Advocacy & Violence Prevention
4202 E. Fowler Avenue
Tampa, Florida 33620

HEALTH: From 9 to 14 members

Walter Niles, Senior Human Services Program Mgr.
Florida Dept. of Health – Hillsborough County
3402 N. 22nd Street
Tampa, Florida 33605

Bryanna Fox
FMHI
13301 Bruce B. Downs Boulevard, MHC 1100
Tampa, Florida 33612

Jane Murphy, Executive Director
Healthy Start Coalition of Hillsborough County, Inc.
2806 N. Armenia Avenue, Suite 100
Tampa, Florida 33607

Frank Strom, Manager
Hillsborough County Veterans Affairs
1208 Tech Boulevard, Suite 300
Tampa, Florida 33619

Frank Jones
US Dept. of Veterans Affairs
10909 Tree Cactus Loop
LandOLakes, FL 33620

COMMUNITY BASED: From 9 to 14 members

Kelley Parris, Executive Director
Childrens Board of Hillsborough County
1002 E. Palm Avenue
Tampa, Florida 33605

Mindy Murphy, CEO
The Spring of Tampa Bay, Inc.
P. O. Box 5147
Tampa, Florida 33675

Lance Lansrud
Community Tampa Bay
1499 Beach Drive, SE, Unit C
St. Petersburg, FL 33701

Rhonda L. Abbott, Vice President
United Way Suncoast
5201 W. Kennedy Boulevard, Ste. 600
Tampa, Florida 33609-1820

Possible:

*Derrick Brooks Charities, Inc.
10014 N. Dale Mabry Highway, Suite 101
Tampa, Florida 33618*

FAITH-BASED: From 9 to 11 members

Djamile Abdel-Jaleen
Muslim Faith Representative